

MADE IN KOREA

BIO TECHNOLOGY  
**boditech**

*Sensible solution  
for your patient*



# AFIAS

Find out more on [www.boditech.co.kr](http://www.boditech.co.kr)



Versatile Desktop Fluorescence Immuno-analyzer

# AFIAS-6

- ▶ Automated POCT system with All-in-One cartridges
- ▶ Easy to use with proprietary C-Tips (for fingertip blood)
- ▶ Up to 6 different parallel tests
- ▶ US FDA 510(K) cleared



## Specifications

### QC/Calibration

- 2 calibrators & 2 controls
- Internal & external controls

### Interface

- 7" touch screen
- Built-in thermal printer
- RS 232 / USB port  
Ethernet / SD card slot
- LIS/HIS compatible

### Memory

- 5,000 patient results
- 5,000 QC results
- 500 ID chips
- 100 User IDs

### Throughput

- Up to 36 tests / hour

### Analyzer

- 420 x 336 x 293 mm
- 15.1 kg
- 100 – 240V AC, 50-60Hz
- Internal temperature control

Automated All-in-one Fluorescence Immuno-analyzer

# AFIAS-1

- ▶ Automated POCT system with All-in-One cartridges
- ▶ Easy to use with proprietary C-Tips (for fingertip blood)
- ▶ Quick test results with reliability
- ▶ Small, compact, & light



## Specifications

### QC/Calibration

- 2 calibrators & 2 controls
- Internal & external controls available

### Interface

- 5" touch screen
- Built-in thermal printer
- RS 232 / USB port  
Ethernet / SD card slot
- LIS/HIS compatible

### Memory

- 5,000 patient results
- 5,000 QC results
- 500 ID chips
- 100 User IDs

### Throughput

- Up to 10 tests / hour

### Analyzer

- 320 x 204 x 180 mm
- 3.9 kg
- 100 – 240V AC, 50-60Hz
- Internal temperature control



## • All-in-One Cartridge

Ready-to-use reagent (single test format)

- ▶ Storage : 2 – 8°C for 20 months
- ▶ Sample type : Serum/plasma/whole blood
- ▶ Packing unit : 24 tests/Kit
- ▶ Test time : 3 – 15 min/each



## • Can use whole blood, Finger prick or Venous

10 µL, 30 µL, whole blood

- No syringes
- No pipettes
- No collection tube
- No centrifuge



Flexibility of using C-tip™ as well as regular tube blood.

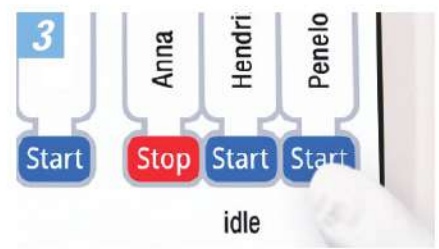
## • 3 simple steps



Step 1: Collect blood

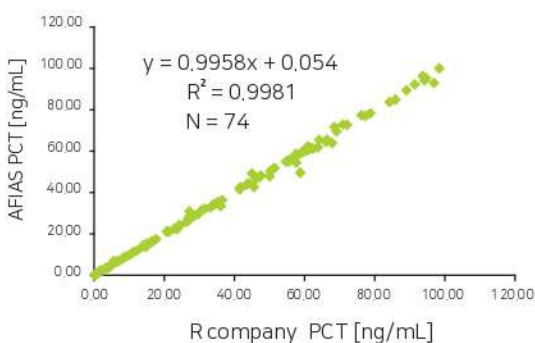


Step 2: Place the C-tip™



Step 3: Press START

## • Study Results



PCT Con. (ng/mL)	Intra-assay			Inter-assay		
	Avg.	SD	CV%	Avg.	SD	CV%
0.1	0.12	0.00	3.87	0.12	0.01	6.78
2.0	2.00	0.05	2.58	2.01	0.03	1.47
100	99.15	1.48	1.49	99.80	0.94	0.94

# AFIAS Parameters

Category	Item	AFIAS-1	AFIAS-6	Sample type	Working range	Test time (min)
Cardiac	Tn-I Plus	●	●	WB/S/P	0.01-15.00 ng/mL	12
	CK-MB	●	●	WB/S/P	3-100 ng/mL	12
	D-Dimer	●	●	WB/P	50-10,000 ng/mL	12
	NT-proBNP	●	●	WB/S/P	10-30,000 pg/mL	12
	Myoglobin	●	●	WB/S/P	2-500 ng/mL	12
	Cardiac Triple	●	●	WB/S/P	Tn-I: 0.01-15 ng/mL CK-MB: 3-100 ng/mL Myoglobin: 5-500 ng/mL	12
	ST2	●	●	WB/S/P	3.1-200 ng/mL	12
	BNP	●	●	WB/S/P	10-20,000 pg/mL	12
Cancer	Troponin T	●	●	WB/S/P	5-5,000 pg/mL	12
	PSA	●	●	WB/S/P	0.5-100.0 ng/mL	15
	PSA Plus	●	●	WB/S/P	0.07-50 ng/mL	12
	AFP	●	●	WB/S/P	5-350 ng/mL	15
	AFP Plus	●	●	WB/S/P	0.5-350 ng/mL	12
	CEA	●	●	S/P	1-500 ng/mL	12
Diabetes	CEA Plus	●	●	WB/S/P	0.5-200 ng/mL	12
	HbA1c	●	●	WB	(NGSP) 4-15%	10
	Microalbumin	●	●	Urine	2-300 mg/L	12
Hormone	TSH	●	●	WB/S/P	0.09-80.0 µIU/mL (WB: 0.4-80.0 µIU/mL)	15
	TSH Plus	●	●	WB/S/P	0.08-50 µIU/mL	12
	T3	●	●	S/P	0.77-7.70 nmol/L	10
	T4	●	●	S/P	10.23-300.00 nmol/L	10
	FSH	●	●	WB/S/P	1-100 mIU/mL	12
	Total βhCG	●	●	WB/S/P	5-50,000 mIU/mL	15
	β-HCG Plus	●	●	WB/S/P	2-1,500 mIU/mL	12
	LH	●	●	WB/S/P	1-100 mIU/mL	12
	PRL	●	●	WB/S/P	1-100 ng/mL	10
	Testosterone	●	●	S/P	1-10 ng/mL	15
	Cortisol	●	●	WB/S/P	80-800 nmol/L	10
	AMH	●	●	S/P	0.02-10 ng/mL	12
Infection	COVID-19 Ab	●	●	WB/S/P	Qualitative	10
	COVID-19 Ag	●	●	Nasopharyngeal swab	Qualitative	12
	COVID-19/Flu Ag Combo	●	●	Nasopharyngeal swab	Qualitative	20
	COVID-19 nAb	●	●	WB/S/P	Qualitative	20
	CRP	●	●	WB/S/P	0.5-200 mg/L	3
	PCT	●	●	WB/S/P	0.1-100.0 ng/mL	12
	PCT Plus	●	●	WB/S/P	0.02-50 ng/mL	12
	IL-6	●	●	WB/S/P	2-2,500 pg/mL	12
	HBsAg	●	●	WB/S/P	Qualitative	12
	Anti-HBs	●	●	WB/S/P	Qualitative	15
	Anti-HCV	●	●	WB/S/P	Qualitative	12
	NORO	●	●	Feces	Qualitative	12
	ROTA	●	●	Feces	Qualitative	12
	Rota/Adeno	●	●	Feces	Qualitative	12
Autoimmune	Anti-CCP Plus	●	●	WB/S/P	3.2-300 U/mL (Semi-quantitative)	12
	Total IgE	●	●	WB/S/P	1-1,000 IU/mL	10
Other test items	Ferritin	●	●	S/P	10-1,000 ng/mL	10
	Vitamin D	●	●	S/P	8-70 ng/mL	28
	Infliximab	●	●	WB/S/P	0.2-50 µg/mL	10
	Total Anti-Infliximab	●	●	S/P	8-250 AU/mL	22